

MONO DESIGNER FELT



111  
WHITE  
③ ⑤



121  
YELLOW  
② ③ ⑤



131  
ORANGE  
② ③ ⑤



132  
MANGO  
③ ⑤



133  
BRIGHT RED  
③ ⑤



134  
DARK RED  
② ③ ③



141  
BURGUNDY  
③ ⑤



142  
FUCHSIA  
② ③ ⑤



144  
PINK  
③ ⑤



145  
LAVENDER  
③ ⑤



143  
PURPLE  
③ ⑤



151  
APPLE GREEN  
③ ⑤



152  
OLIVE  
② ③ ⑤



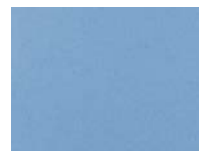
153  
KELLY GREEN  
③ ⑤



154  
TEAL  
③ ⑤



155  
FOREST GREEN  
③ ⑤



161  
LIGHT BLUE  
② ③ ⑤



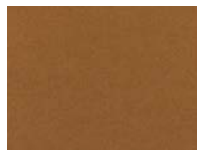
162  
BLUE  
② ③ ⑤



164  
ELECTRIC BLUE  
③ ⑤



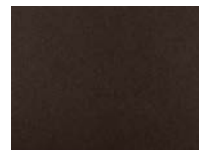
163  
DARK BLUE  
③ ⑤



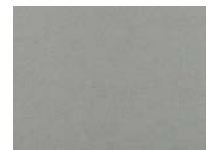
171  
LIGHT BROWN  
③ ⑤



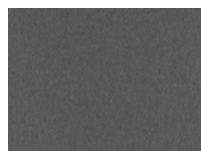
172  
COFFEE  
② ③ ⑤



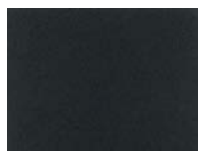
173  
CHOCOLATE  
③ ⑤



181  
LIGHT GREY  
③ ⑤



182  
DARK GREY  
② ③ ⑤



183  
BLACK  
② ③ ⑤

Please refer to the numerals under each colour name to determine which thicknesses are produced in that colour.

② 2mm (1/16 in)  
③ 3mm (1/8 in)  
⑤ 5mm (3/16 in)

\* Please note: colours which appear online or in print may differ slightly from actual felt. Slight colour variation may occur from dye lot to dye lot.

NATURAL DESIGNER FELT



311  
WOOL WHITE

② ③



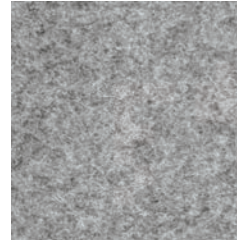
312  
RAW WHITE

② ③



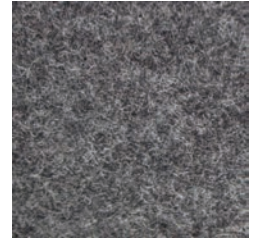
381  
CONCRETE GREY

② ③



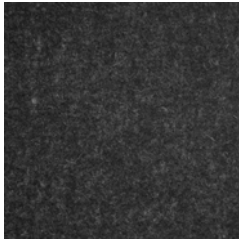
382  
PEBBLE GREY

② ③



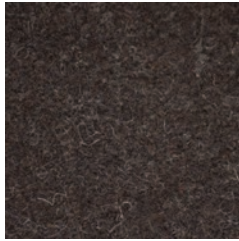
383  
STONE GREY

② ③



384  
CHARCOAL

② ③



371  
BURNT OAK

② ③

Please refer to the numerals under each colour name to determine which thicknesses are produced in that colour.

② 2mm (1/16 in)

③ 3mm (1/8 in)

⑤ 5mm (3/16 in)

*\* Please note: colours which appear online or in print may differ slightly from actual felt. Slight colour variation may occur from dye lot to dye lot.*

DUO DESIGNER FELT



221  
VANILLA  
③



222  
PALE YELLOW  
③



231  
BURNT ORANGE  
③



232  
MANGO ORANGE  
③



233  
FLAME RED  
③



241  
ROSE PINK  
③



251  
MEADOW GREEN  
③



261  
SKY BLUE  
③



271  
SIERRA BROWN  
③



272  
SAND  
③



275  
TAUPE  
③ ⑤



273  
TERRACOTTA  
③



274  
ASH BROWN  
③

Please refer to the numerals under each colour name to determine which thicknesses are produced in that colour.

② 2mm (1/16 in)  
③ 3mm (1/8 in)  
⑤ 5mm (3/16 in)




*\* Please note: colours which appear online or in print may differ slightly from actual felt. Slight colour variation may occur from dye lot to dye lot.*

## DESIGNER FELT - TECHNICAL DATA SHEET

General Properties		
Minimum Wool Content	100%	
Nominal Specific Density	0.28 - 0.30 g/cm <sup>3</sup>	
Standard Width	180 cm	70.9"

Thickness and Weight Metric System		
Thickness		Weight
Nominal	Limits	Nominal
② 2mm (approx. 1/16 in)	1.7 - 2.3	1008 - 1080 g/lin. Meter ( Approx. 560 - 600 g/m <sup>2</sup> )
③ 3mm (approx. 1/8 in)	2.7 - 3.3	1512 - 1660 g/lin. Meter ( Approx. 840 - 922 g/m <sup>2</sup> )
⑤ 5mm (approx. 3/16 in)	4.6 - 5.4	2520 - 2700 g/lin. Meter ( Approx. 1400 - 1500 g/m <sup>2</sup> )

Flammability	
ASTM E84	Class A

Environmental	
Oeko-Tex® Standard 100 - Product Class I	
Registration, Evaluation, Authorisation of Chemicals (REACH) VO (EG) Nr. 1907/2006	
Guideline for the restriction of certain hazardous substances in electrical and electronic equipment (RoHS) 2011/65/EU	

Visit <http://www.brandfelt.com> for complete information.

*\* Please note: colours which appear online or in print may differ slightly from actual felt. Slight colour variation may occur from dye lot to dye lot.*