

MONO DESIGNER FELT



111
WHITE
③ ⑤



121
YELLOW
② ③ ⑤



131
ORANGE
② ③ ⑤



132
MANGO
③ ⑤



133
BRIGHT RED
③ ⑤



134
DARK RED
② ③ ③



141
BURGUNDY
③ ⑤



142
FUCHSIA
② ③ ⑤



144
PINK
③ ⑤



145
LAVENDER
③ ⑤



143
PURPLE
③ ⑤



151
APPLE GREEN
③ ⑤



152
OLIVE
② ③ ⑤



153
KELLY GREEN
③ ⑤



154
TEAL
③ ⑤



155
FOREST GREEN
③ ⑤



161
LIGHT BLUE
② ③ ⑤



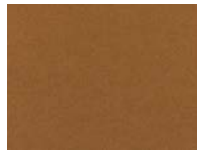
162
BLUE
② ③ ⑤



164
ELECTRIC BLUE
③ ⑤



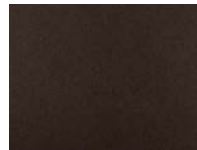
163
DARK BLUE
③ ⑤



171
LIGHT BROWN
③ ⑤



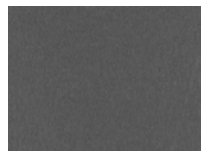
172
COFFEE
② ③ ⑤



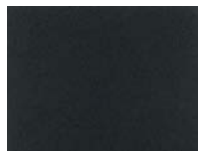
173
CHOCOLATE
③ ⑤



181
LIGHT GREY
③ ⑤



182
DARK GREY
② ③ ⑤



183
BLACK
② ③ ⑤

Please refer to the numerals under each colour name to determine which thicknesses are produced in that colour.

② 2mm (1/16 in)
③ 3mm (1/8 in)
⑤ 5mm (3/16 in)

* Please note: colours which appear online or in print may differ slightly from actual felt. Slight colour variation may occur from dye lot to dye lot.

NATURAL DESIGNER FELT



311
WOOL WHITE

② ③



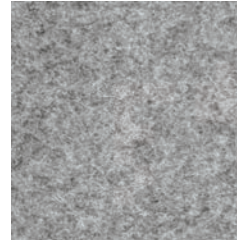
312
RAW WHITE

② ③



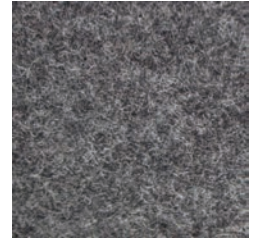
381
CONCRETE GREY

② ③



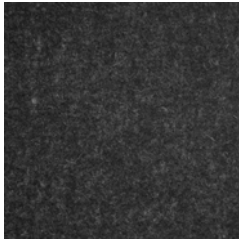
382
PEBBLE GREY

② ③



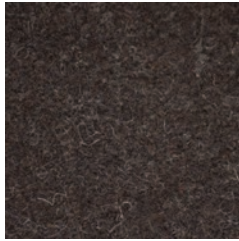
383
STONE GREY

② ③



384
CHARCOAL

② ③



371
BURNT OAK

② ③

Please refer to the numerals under each colour name to determine which thicknesses are produced in that colour.

② 2mm (1/16 in)

③ 3mm (1/8 in)

⑤ 5mm (3/16 in)

** Please note: colours which appear online or in print may differ slightly from actual felt. Slight colour variation may occur from dye lot to dye lot.*

DUO DESIGNER FELT



221
 VANILLA
 (3)



222
 PALE YELLOW
 (3)



231
 BURNT ORANGE
 (3)



232
 MANGO ORANGE
 (3)



233
 FLAME RED
 (3)



241
 ROSE PINK
 (3)



251
 MEADOW GREEN
 (3)



261
 SKY BLUE
 (3)



271
 SIERRA BROWN
 (3)



272
 SAND
 (3)



275
 TAUPE
 (3) (5)



273
 TERRACOTTA
 (3)



274
 ASH BROWN
 (3)

Please refer to the numerals under each colour name to determine which thicknesses are produced in that colour.

(2) 2mm (1/16 in)
 (3) 3mm (1/8 in)
 (5) 5mm (3/16 in)




** Please note: colours which appear online or in print may differ slightly from actual felt. Slight colour variation may occur from dye lot to dye lot.*

DESIGNER FELT - TECHNICAL DATA SHEET

General Properties		
Minimum Wool Content	100%	
Nominal Specific Density	0.28 - 0.30 g/cm ³	
Standard Width	180 cm	70.9"

Thickness and Weight Metric System		
Thickness		Weight
Nominal	Limits	Nominal
② 2mm (approx. 1/16 in)	1.7 - 2.3	1008 - 1080 g/lin. Meter (Approx. 560 - 600 g/m ²)
③ 3mm (approx. 1/8 in)	2.7 - 3.3	1512 - 1660 g/lin. Meter (Approx. 840 - 922 g/m ²)
⑤ 5mm (approx. 3/16 in)	4.6 - 5.4	2520 - 2700 g/lin. Meter (Approx. 1400 - 1500 g/m ²)

Flammability	
ASTM E84	Class A

Environmental	
Oeko-Tex® Standard 100 - Product Class I	
Registration, Evaluation, Authorisation of Chemicals (REACH) VO (EG) Nr. 1907/2006	
Guideline for the restriction of certain hazardous substances in electrical and electronic equipment (RoHS) 2011/65/EU	

Visit <http://www.brandfelt.com> for complete information.

** Please note: colours which appear online or in print may differ slightly from actual felt. Slight colour variation may occur from dye lot to dye lot.*